

STRONGEST IN FINLAND GOLD

AEMA Oy
FI24261635 | 2024



ZOE Energy Group Catalogue

In Partnership with AEMA OY



Choose your best fit ZOE ESS and get your
special price through epc.aema.fi



● About ZOE

ZOE Energy Storage, a pioneer in integrating investment, operation of energy storage stations, and the R&D, manufacturing, and sales of energy storage systems, has its global headquarters in Shanghai. With its R&D center in Jiangsu and joint laboratories established with top universities and international institutions, ZOE advances the development and application of energy storage technology. The company operates 14GWh intelligent energy storage factories in Jiangxi and Sichuan and has established the ZOE Digital Center in Shanghai. Leveraging outstanding R&D capabilities and innovative approaches, ZOE delivers both standardized and tailored energy storage solutions, bridging grids and scenarios for organized electricity use and balanced loads.

As a subsidiary of the ZOE Energy Group, ZOE Energy Storage contributes to the group's overarching mission. Founded in 2013, ZOE Energy Group is a high-tech enterprise dedicated to the development, investment, and management of new energy projects. Targeting carbon neutrality, the Group has developed 23 utility-scale solar projects with a combined capacity of 3.53GW and is progressing with wind, photovoltaic projects of 1.23GW. With a cumulative investment exceeding \$4.4 billion, the Group has realized an annual compound growth rate of 183%, underscoring its commitment to sustainable energy development.



Core Business

ENERGY STORAGE SYSTEM
R&D, Manufacturing, Sales

ENERGY STORAGE PLANTS
Investment and operation



R&D Innovation

Establish joint laboratories with universities and research institutions to advance the development and application of energy storage technology



Manufacturing

14GWh Intelligent Energy Storage Factory



Our Service

Service Area
Europe, China, Online Services

Technical Support
O&M Analysis, After-Sales Service

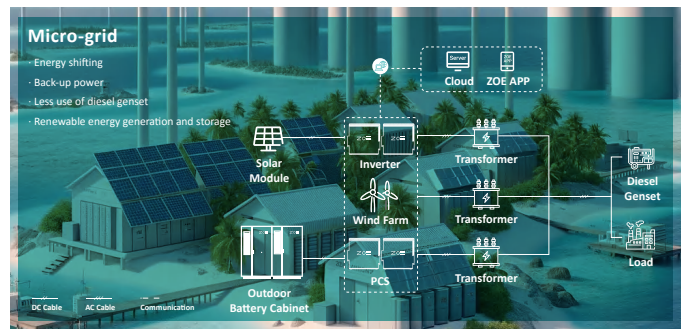
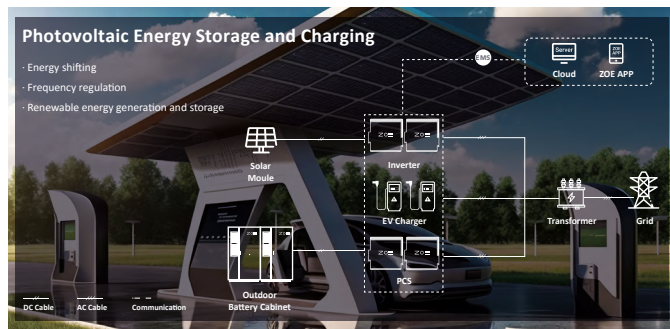
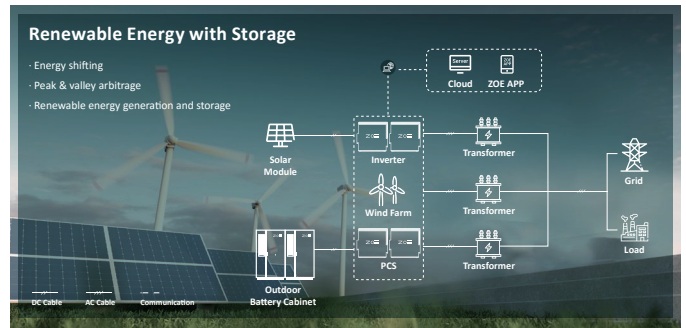
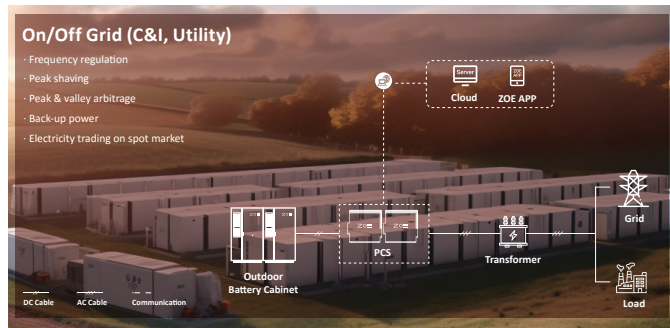
● Qualification Certification

Our products are internationally certified, ensuring compliance with global safety, quality, and performance standards

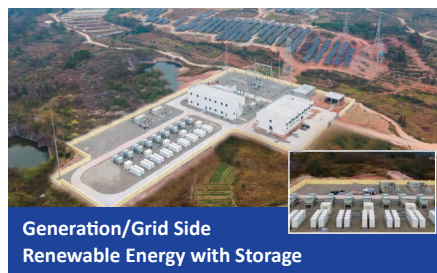
- CE certified, adhering to Europe's LVD and EMC standards for electrical safety and electromagnetic interference
- Certified for EU grid connection under EN 50549-1, recognized in Sweden, Poland, Spain, and Italy for seamless local grid integration
- Achieving certifications like CGC and CQC, meeting rigorous quality control and product consistency standards throughout production



Solutions



Project Cases



Xishan Energy Storage Power Station Project

Scenario Requirements: PV+Storage

Project Date: 2023

System Capacity: 27MW/27MWh

Application: Peak shaving, Frequency regulation



Hongfeng Solar and Storage Project

Scenario Requirements:

24/7 uninterrupted high-energy usage

Project Date: 2024

System Capacity: 11MW/22MWh

Application: Peak shaving, Back-up power

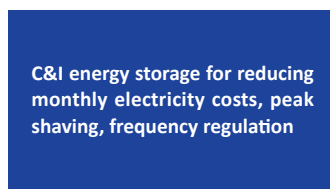


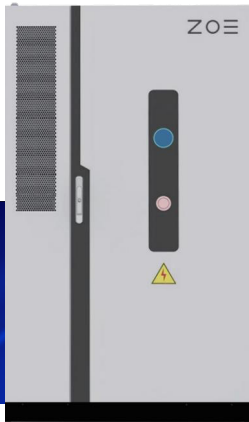
Highland Energy Storage Project

Scenario Requirements: Renewable energy storage in low-temperature environments at high altitudes

Application: Maximizing renewable energy use, preventing wind and solar waste

Projects Gallery





Z BOX-H Battery Cabinet

● **H 372-2H** C372L-D-EU 372kWh | 0.5C

- Safe & Reliable
- Flexible Deployment
- Cost-efficient
- Smart Management

Battery data

Cell type	LFP
Rated capacity	280 Ah
Serial-parallel type	1P416S
Rated capacity per pack	46.592 kWh
Pack number	8
System rated energy capacity	372.736 kWh
Rated DC voltage	1331.2 V
Rated DC voltage range	1164.8~1497.6 V
Rated DC current	140 A

General data

DOD	95%
Protection degree	IP 55 (Battery room)
Cooling method	Liquid Cooling/Heating
Fire suppression system	Aerosol
Operating temperature range	-20 ~ 55 °C
Relative humidity	5% ~ 95% RH
Max.working altitude	2000 m
Display	APP/ Web/ LED
COM interfaces	RS485/ Ethernet
Dimensions (L*W*H)	1330*1370*2270 mm
Weight	3550±50 kg



Z BOX-C ALL-IN-ONE ESS Cabinet

● **C 215-2H** C215L-A-EU 105kW / 215kWh | 0.5C

- Safe & Reliable
- Flexible Deployment
- Cost-efficient
- Smart Management

Battery data

Cell type	LFP
Rated capacity	280 Ah
Serial-parallel type	1P240S
Rated capacity per pack	43.008 kWh
Pack number	5
System rated energy capacity	215.04 kWh
Rated DC voltage	768 V
Rated DC voltage range	672~864 V
Rated DC current	140 A

AC data

Rated AC power	105 kW
Rated AC voltage	400 Vac
Rated frequency	50/60 Hz
Rated AC current	152 A
Max. AC current	167 A
AC wiring type	3W/N+PE
Power factor	-1 ~ 1

General data

DOD	95%
Protection degree	IP 55 (Battery room)
Cooling method	Liquid Cooling/ Heating
Fire suppression system	Aerosol
Operating temperature range	-20 ~ 55 °C
Relative humidity	5% ~ 95% RH
Max.working altitude	2000 m
Display	APP/ Web/ LED
COM interfaces	RS485/ Ethernet/ 4G (optional)
Dimensions (L*W*H)	1344*1399*2080 mm
Weight	2450±50 kg



Z BOX-I ALL-IN-ONE ESS Cabinet

● **I 156-1H** 150kW / 156kWh | 1C

- Low costs
- Safe & reliable
- Flexible
- Efficient

Model	I01-90KN-94	I01-100KN-104	I01-110KN-114	I01-120KN-125	I01-120KN-135	I01-150KN-156
-------	-------------	---------------	---------------	---------------	---------------	---------------

Battery data

Cell type	LFP					
Rated capacity	102 Ah					
Serial-parallel type	2P144S	2P160S	2P176S	2P192S	2P208S	2P240S
Rated capacity per pack	10.444 kWh					
Pack number	9	10	11	12	13	15
System rated energy capacity	93.996 kWh	104.44 kWh	114.884 kWh	125.328 kWh	135.772 kWh	156.66 kWh
Rated DC voltage	460 V	512 V	563 V	614 V	665 V	768 V
Rated DC voltage range	403~518 V	448~576 V	492~633 V	537~691 V	582~748 V	672~864 V

AC data

Rated AC power	90 kW	100 kW	110 kW	120 kW	120 kW	150 kW
Rated AC voltage	400 Vac					
Rated frequency	50/60 Hz					
Rated AC current	129 A	144 A	158 A	173 A	173 A	216 A
AC wiring type	3W/N+PE					
Power factor	-0.8 ~ 0.8					

General Data

DOD	95%
Protection degree	IP 54
Cooling Method	Intelligent fan cooling
Fire Suppression System	Novec 1230 + Aerosol
Operating temperature range	-20 ~ 60 °C (> 45°C derating)
Relative humidity	0% ~ 95% RH (non-condensing)
Max.working altitude	2000 m
Display	Touch screen
COM interfaces	WiFi + LAN
Dimensions (L*W*H)	1400*1600*2200
Weight	2000~2400 ±50 kg

Z BOX-P



● P 1300-1H ALL-IN-ONE ESS Container

P1313L1H-A-EU 1.26MW/ 1.313MWh | 1C

Battery Data	
Cell type	LFP
Rated capacity	285 Ah
Serial-parallel type	6P240S
Rated capacity per pack	43.776 kWh
Pack number	6*5
System rated energy capacity	1313.28 kWh
Rated DC voltage	768 V
Rated DC voltage range	672~864 V
Rated DC current	1710 A
AC Data	
Rated AC power	1260 kW
Rated AC voltage	400 Vac
Rated frequency	50/60 Hz
Rated AC current	1818 A
Max. AC current	2052 A
AC wiring type	3W/ N+ PE
Power factor	-1 ~ 1
General Data	
DOD	90%
Protection degree	IP 54
Cooling method	Liquid Cooling/ Heating
Fire suppression system	NOVEC 1230 + Aerosol
Operating temperature range	-20 ~ 55 °C
Relative humidity	5% ~ 95% RH
Max.working altitude	2000 m
Display	Web/ LED/ LCD
COM interfaces	RS485/ Ethernet
Dimensions (L*W*H)	6058*2438*2591 mm
Weight	20 T

● P 3400-2H Battery Container

P3440L2H-B 3440kWh | 0.5C

Battery Data	
Cell type	LFP
Rated capacity	280 Ah
Serial-parallel type	10P384S
Rated capacity per pack	43.008 kWh
Pack number	10*8
System rated energy capacity	3440.64 kWh
Rated DC voltage	1228.8 V
Rated DC voltage range	1075.2~1382.4 V
General Data	
DOD	90%
Degree of protection	IP 54
Cooling method	Liquid Cooling/ Heating
Fire suppression system	Drypipe, Ventilation, Aerosol (optional)
Operating temperature range	-30 ~ 50 °C
Relative humidity	0% ~ 95% RH (no condensing)
Max. working altitude	3000 m
Display	Web
COM interfaces	Modbus TCP/ IP
Dimensions(L*W*H)	6058*2438*2896 mm
Weight	36 T





● P 3400-1H Battery Container

P3440L1H-B 3440kWh | 1C

Battery Data	
Cell type	LFP
Rated capacity	280 Ah
Serial-parallel type	10P384S
Rated capacity per pack	43.008 kWh
Pack number	10*8
System rated energy capacity	3440.64 kWh
Rated DC voltage	1228.8 V
Rated DC voltage range	1075.2~1382.4 V
General Data	
DOD	90%
Degree of protection	IP 54
Cooling/ Heating concept	Liquid Cooling/ Heating
Fire suppression system	Drypipe, Ventilation, Aerosol (optional)
Operating temperature range	-30 ~ 50 °C
Relative humidity	0% ~ 95% RH (no condensing)
Max. working altitude	3000 m
Display	Web
COM interfaces	Modbus TCP/ IP
Dimensions(L*W*H)	6058*2438*2896 mm
Weight	36 T

● P 5000-2H Battery Container

P5015L2H-A-EU 5015kWh | 0.5C

Battery Data	
Cell type	LFP
Rated capacity	314 Ah
Serial-parallel type	12P416S
Rated capacity per pack	104.499 kWh
Pack number	12*4
System rated energy capacity	5015.952 kWh
Rated DC voltage	1331.2 V
Rated DC voltage range	1040~1497.6 V
General Data	
DOD	90%
Degree of protection	IP 54
Cooling/ Heating concept	Liquid Cooling/ Heating
Fire suppression system	Aerosol
Operating temperature range	-30 ~ 50 °C
Relative humidity	0% ~ 95% RH
Max. working altitude	2000 m
Display	Web
COM interfaces	RS485/ CAN/ Modbus TCP/ IP
Dimensions(L*W*H)	6058*2438*2896 mm
Weight	42 T

